



# XCMG SYDNEY

SYDNEY - CANBERRA - WOLLONGONG - SOUTH COAST

# XE27U MINI EXCAVATOR



[xcmgsydney.com.au](http://xcmgsydney.com.au)

# XE27U

## PERFORMANCE, RELIABILITY & VALUE

### GLOBAL DOMINANCE

XCMG is the World's 3rd largest construction machinery manufacturer, with branches dealers and service agents throughout Australia.

### KUBOTA ENGINE

Renowned Kubota Euro Stage V emission certified engine delivering maximum power and torque plus exceptional reliability and longevity.

### SAFETY VALVES

Unlike many other makes and models in its size class, arm and boom safety valves are included as standard on the XE27U, further enhancing your operational safety and peace of mind.

### INTELLIGENT DESIGN

The innovative and practical design of the XE27U, with its spacious cab and robust undercarriage, delivers unmatched stability, comfort and control.

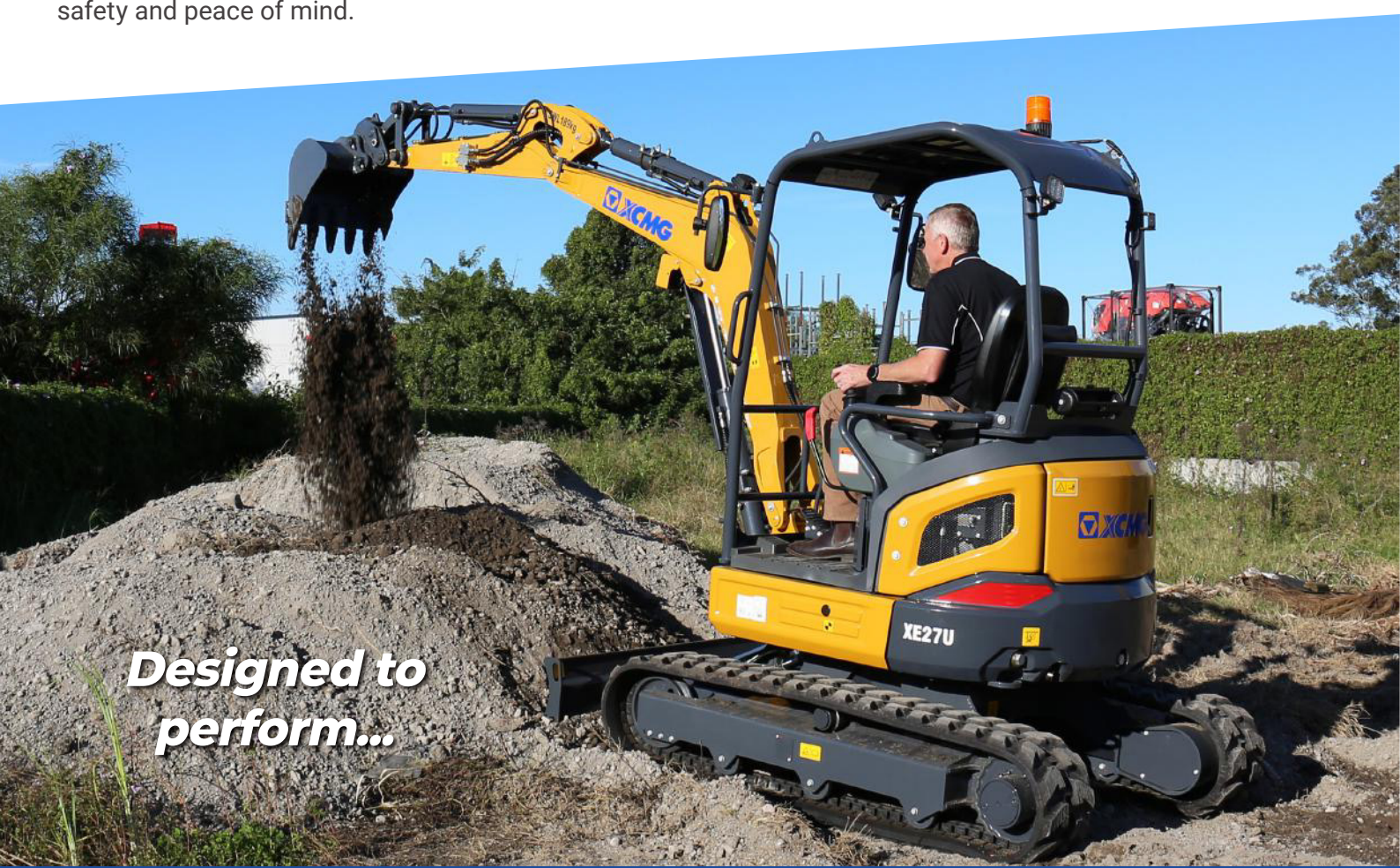
### ZERO TAILSWING

Operate with maximum performance, safety and efficiency in tight spaces thanks to the XE27U's true zero tailswing design.

### EXCEPTIONAL HYDRAULICS

Class-leading 82.8 LPM hydraulic system delivers exceptional flow rates to attachments, with maximum oil flow control on Auxiliary 1 and 2.

*Designed to perform...*



# MINI EXCAVATOR

## OPEN CANOPY

ROPS, TOPS and OPG certified canopy is durable and robust to handle severe impact, ensuring your safety and peace of mind while operating.

## VISIBILITY PLUS

In addition to the 360 degree visibility offered by the XE27U's clever open canopy design, also included as standard are front work lights for low light operation.

## RELIABILITY & TRUST

XCMG's key focus is the complete satisfaction and success of every machine owner - making your business as profitable as possible.

## EXTRA SAFETY FEATURES

XCMG has designed the XE27U with safety at the forefront, including an emergency stop, travel alarm, rotating beacon, and rear view mirrors as standard.

## BUCKET KIT

Included with every XE27U is a premium bucket kit for maximum versatility: 300mm, 450mm, 600mm and 1200mm buckets, plus a hydraulic hitch.

## UNMATCHED SUPPORT

Product experts at your local dealer provide exceptional support throughout your machine's lifetime: operation, maintenance and service from the delivery date through to its very last day on the job.

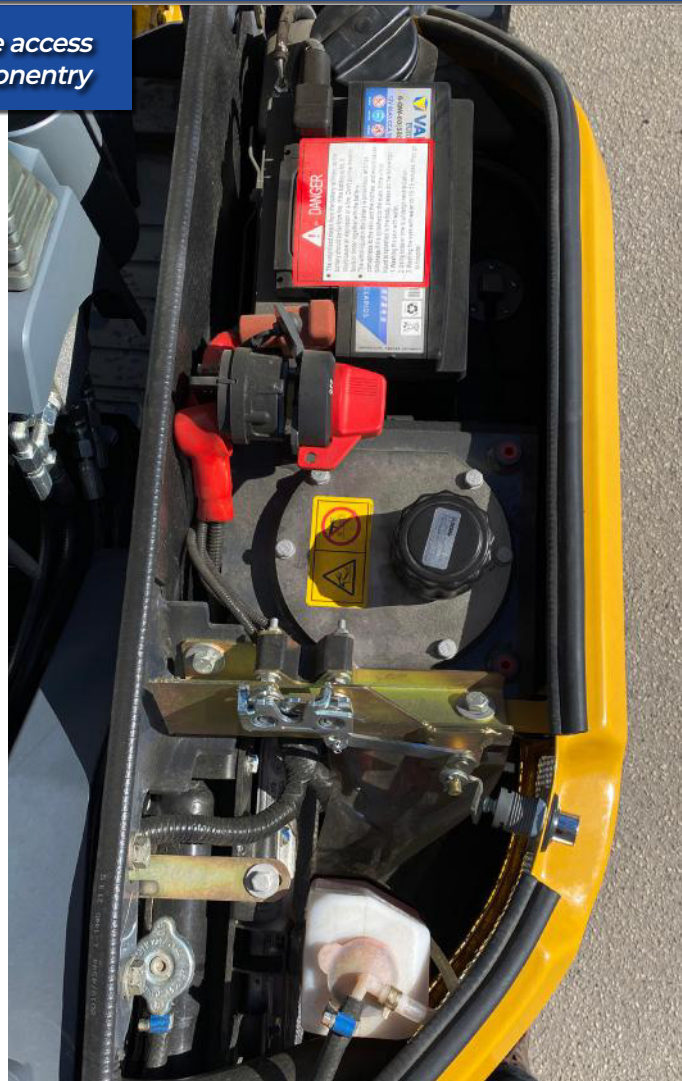


*...built to last.*

# XE27U



Easy service access to all componentry



Stable and heavy duty undercarriage



Ergonomic zero tailswing design

# MINI EXCAVATOR



Comfortable operator station with colour display screen

## LIFTING CHART

Lift Point Height	Over Front Blade Up/Down					Over Side					Max Radius (mm)
	Lift at Max Radius (kg)	1m	2m	3m	4m	Lift at Max Radius (kg)	1m	2m	3m	4m	
3m	402			*435		290			360		3373
2m	310			*479		220			350		3928
1m	282		847	455	294	198		525	321	207	4105
Ground	290		791	430		203		525	298		3969
-1m	350	*1229	794	425		244	*1229	527	294		3471
-2m	*475		*596			465		562			2275

1. The nominal forces are based on the ISO10567:2007 standard.

2. \* = The nominal loads are based on hydraulic capacity.

3. The nominal loads do not exceed 87% of the hydraulic capacity or 75% of the capacity of the swing.

# XE27U SPECIFICATIONS



XE27U	A	B	C	D	E	F	G	H
mm	1500	290	4190	1300	1560	535	2580	310

## KEY PERFORMANCE SPECIFICATIONS

Key Specs	Operating Weight:	2700 kg
	Engine Model:	Kubota D1105 Euro Stage V
	Maximum Power:	20.9 hp / 15.4 kW @ 2400 rpm
	Maximum Torque:	70.3 nM / 1600 rpm
	Maximum Travel Speed:	3.1 km/h
	Tailswing:	Zero
	Boom Type:	Swing Boom
	Dipper / Boom Length:	1300mm / 2090mm
	Safety Valves:	Yes, Arm + Boom
	Bucket / Arm Digging Forces:	23 / 14 kN
	Swing Speed	10 rpm
Maximum Dig Reach / Depth:	4750 mm / 2800 mm	
Maximum Dump Height:	3120 mm	
Operator Station	Canopy / Cabin Type:	Open Canopy
	Canopy / Cabin Safety:	ROPS / TOPS / OPG
	Seat:	Suspension
Hydraulics	Display Screen	Yes, Included as Standard
	Pump Type:	Load-Sensing Axial Piston Pump w/ Variable Displacement
	Pump Make:	XCMG
	Slew Pump Make	XCMG
	Wheel Motor Make:	XCMG
	Hydraulic Piping:	Single / Bidirectional
	Hydraulic System Flow:	82.8 LPM
Hydraulic Aux1 Flow:	38 LPM	
Additional Features	Track Shoes:	300mm Rubber
	Dozer Blade:	Yes, Included as Standard
	Front Work Lights:	Yes, Included as Standard
	Amber Rotating Beacon:	Yes, Included as Standard
	Emergency Stop:	Yes, Included as Standard
	Rear View Mirrors:	Left + Right
	Lockable Battery Isolator:	Yes, Included as Standard
Bucket/s Included:	300mm + 450mm + 600mm + 1200mm	

Note: specifications listed above are correct at May 2022 and are subject to change any time.

# ABOUT US

## INDUSTRY EXPERTISE

XCMG is one of Australia's fastest growing construction, mining and agriculture equipment suppliers.

Offering premium quality excavators, wheel loaders, compaction rollers, graders, elevated work platforms and more, XCMG has the products and the support to keep you working on any job site.

## MACHINERY SALES

XCMG know construction, mining and agri machinery. Count on our dedicated and knowledgeable team of product experts to take the time to understand and satisfy your machinery needs by recommending the right solution for the job.

## AFTERMARKET SUPPORT

We're here to help keep you and your machine working. With an exceptional over-the-counter fill rate on spare parts, you're assured that when you buy an XCMG machine, you'll be looked after throughout your machine's entire lifetime, from start to finish.

Every service job is as important to us as it is to you, and with a dedicated team of machinery technicians, we have ample resources to look after any of your machine repairs or servicing requirements quickly and efficiently.

## RENTALS & HIRE

If you need a high-performance machine with reliability you can trust, and the flexibility of hiring, we have you covered.

Our fleet is diverse, with machines to suit almost any job. Furthermore, because our rental fleet is maintained by factory-trained technicians, you can be confident that you'll not only be getting the best machines on the market, but that it's going to work as hard as you do, day-in day-out.

## ABOUT

*The World's 3rd largest manufacturer of construction and mining equipment.*

*Founded in 1943 - equipped with more than 8 decades of experience in the industry.*

*Manufacturing facilities located around the world: USA, Germany, China, Brazil and India.*

*Extensive supply chain and dealer network throughout Australia offering premium aftersales service and parts support.*

*Deep relationships with corporate giants Rio Tinto, BHP and MMG in Australia.*

## MINI / LARGE EXCAVATORS

*1 to 100+ Tonne*

## WHEEL LOADERS

*5 to 100 Tonne*

## COMPACTION ROLLERS

*1.5 to 30 Tonne Smooth & Padfoot*

## GRADERS

*7.5 to 70 Tonne*

## ACCESS EQUIPMENT

*Lift Heights from 5 to 21 Metres*

## MINING TRUCKS

*20 to 100 Tonne*

**FIND OUT MORE & LOCATE YOUR NEAREST DEALER:**

**[xcmgsydney.com.au](http://xcmgsydney.com.au)**

**“XCMG: FOR YOUR SUCCESS”**



# XCMG SYDNEY

**SYDNEY - CANBERRA - WOLLONGONG - SOUTH COAST**

## **YOUR LOCAL XCMG DEALER:**

---

**SYDNEY:** 119-125 Hume Highway, Chullora, NSW, 2190

**CANBERRA:** Lot 5, 44 Railway Street, Oakes Estate. ACT 2620

**WOLLONGONG:** 10 Harris Street, Port Kembla, 2505

---

**(02) 9099 9774**

[sales@xcmgsydney.com.au](mailto:sales@xcmgsydney.com.au)



[xcmgsydney.com.au](http://xcmgsydney.com.au)